

Installation

- Requirements:
 - Administrative Permissions
 - Internet Explorer 5.5 or above
- Navigate to:
- `<cd drive>:\Reprodesk\products\reprodesk`
- Launch Setup

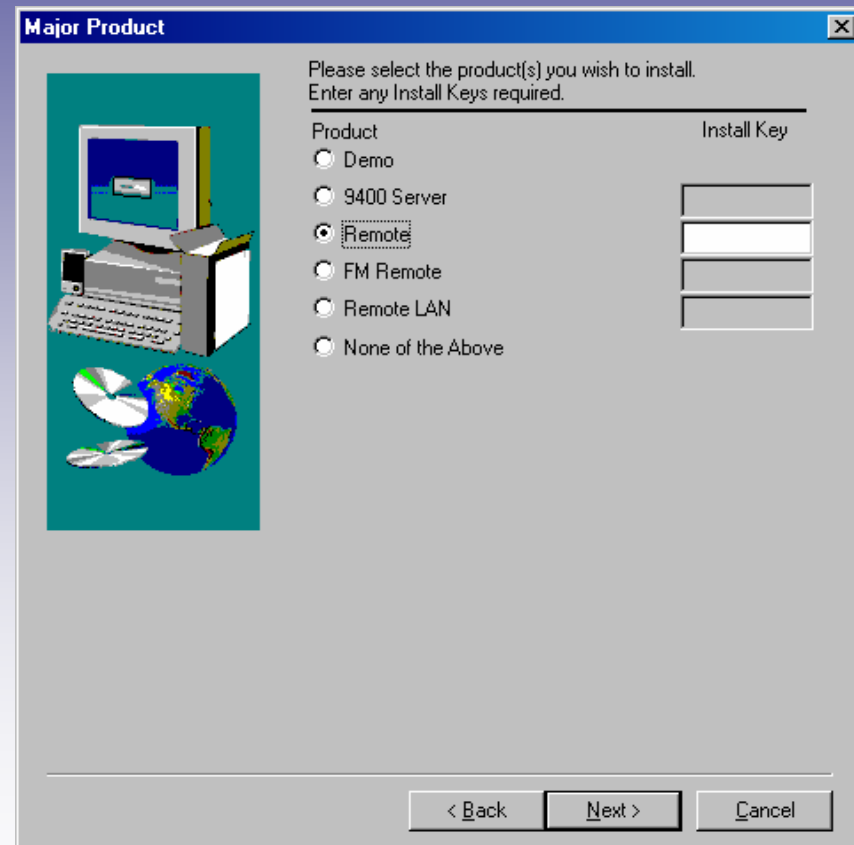
Distribution

- Hobs Reprographics plc warrant that the client version of Reprodesk is freely distributable to its clients.

Hobs Reprographics plc

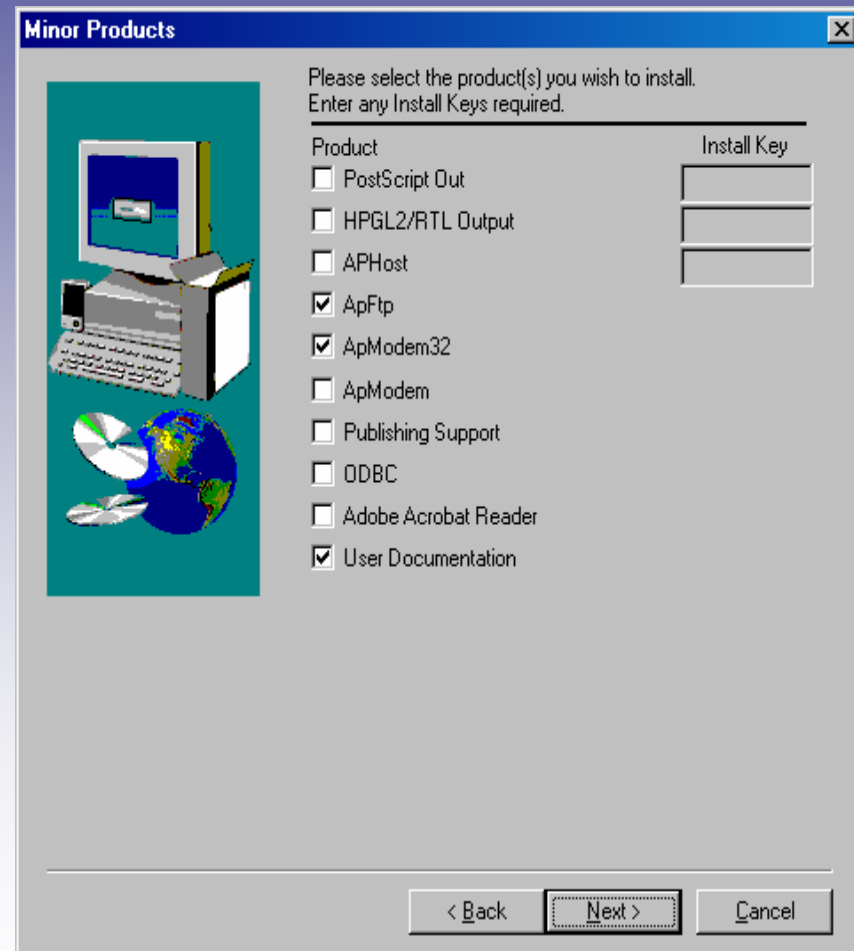
Installation

- Select the defaults until you see the screen as displayed
- Enter 4236422623 as the installation code
- Click Next



Installation - continued

- Remove the ticks from all of the boxes, then click Next.



Installation - continued

- If the locations are acceptable, click Next.

Folder Locations

Please Enter all folder locations for the install

Main Installation Folder
C:\ocerd

Autocad Font Folder
C:\Program Files\AutoCAD2000\fonts

VIC File Location
C:\ocerd\VIC

Repro Desk Common Path
C:\Program Files\Common Files\Repro Desk

< Back Next > Cancel

Installation - continued

- Place a tick in the bottom two boxes, then click Next.

Other Configurations

Please specify other settings for your installation.

Please select US or Metric Units.

U.S.

Metric

Select a location for shortcuts:

Personal Folder Group

All Users Folder Group

Please Select 9800 Server Driver to Install:

Oce 9800 DRI

Parallel

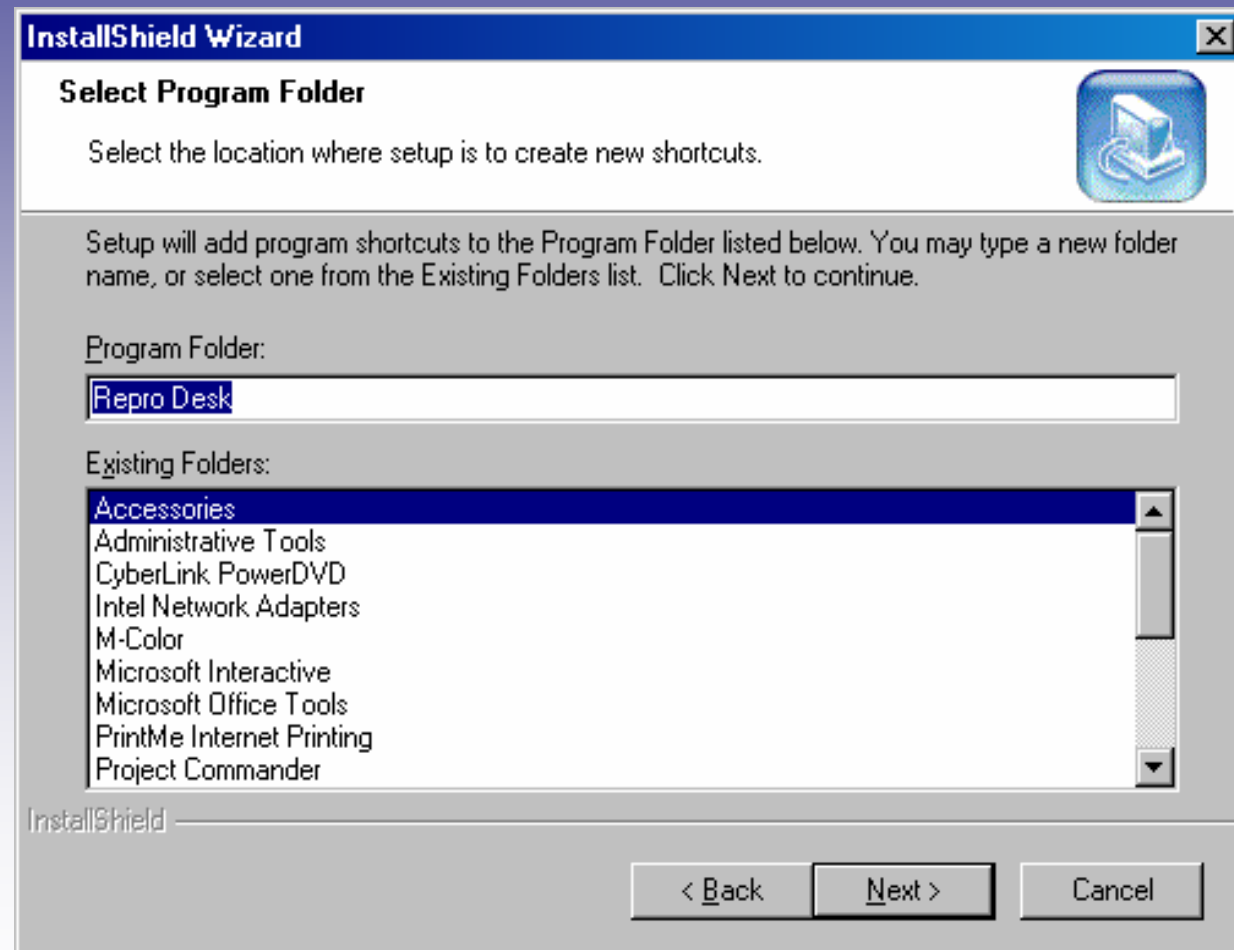
Display folding column in the job window

Create a shortcut on the desktop

< Back Next > Cancel

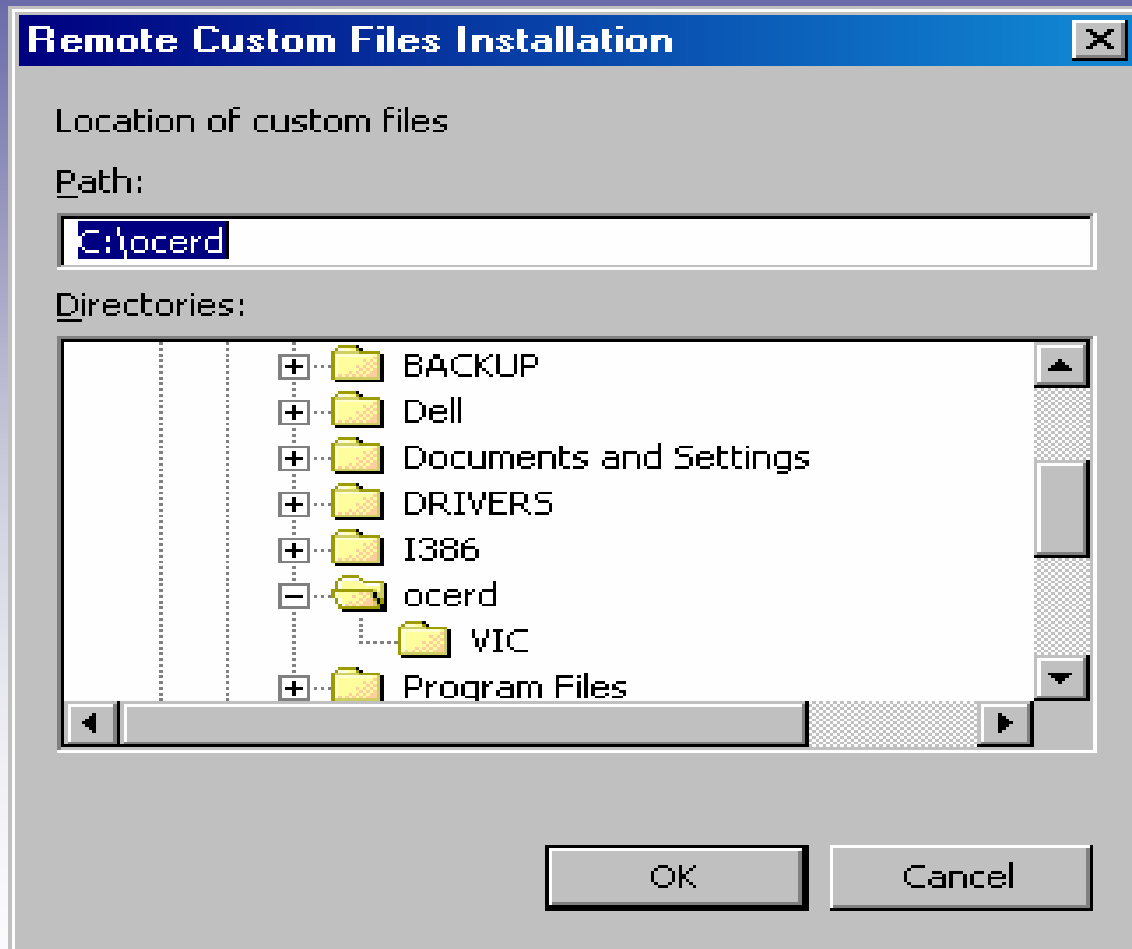
Installation - continued

- Amend as necessary then click Next.



Installation - continued

- When the files have finished copying, accept the default location and click ok.



Installation - continued

- You may be asked to restart your computer!

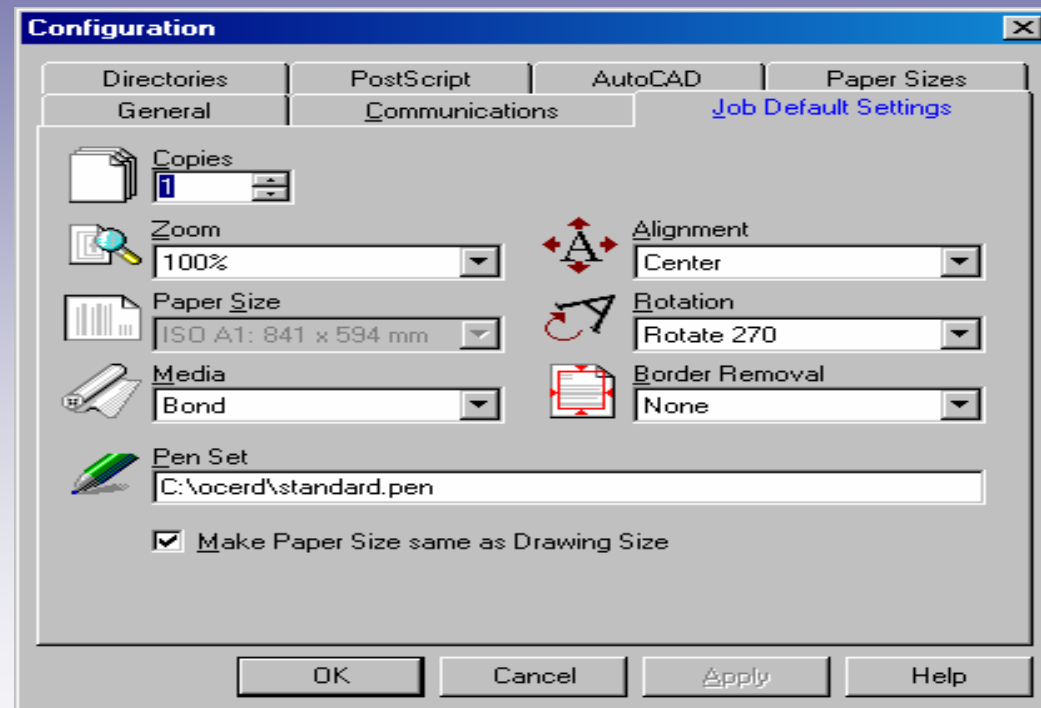
Configuration - Reprodesk

- Launch Reprodesk
- Go to the Configure, Defaults menu



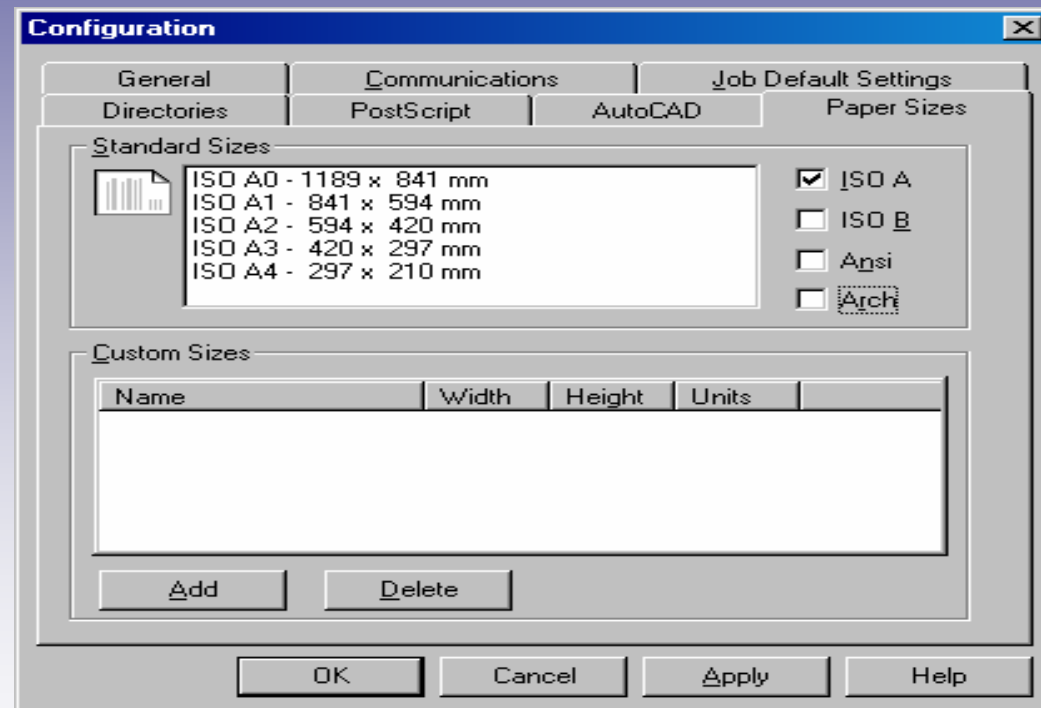
Configuration – Job Defaults

- Select the Job Defaults tab.
- Enter the settings as shown then select Paper Sizes



Configuration – Paper Sizes

- Select the Paper Sizes tab
- Just select ISO A



Configuration – File Copy

- Locate the files named woinfo.xml and logobitmap.gif on the Reprodesk CD.
- Copy these files into the default Reprodesk installation location, which is c:\ocerd
- This file contains the updated job ticket info

From the CD in the apftpx folder Run setup.exe. Accept all defaults until installation is complete.

Click add to configure a new communication – ie the Leeds office.

ftp server address – leeds.hobsrepro.com

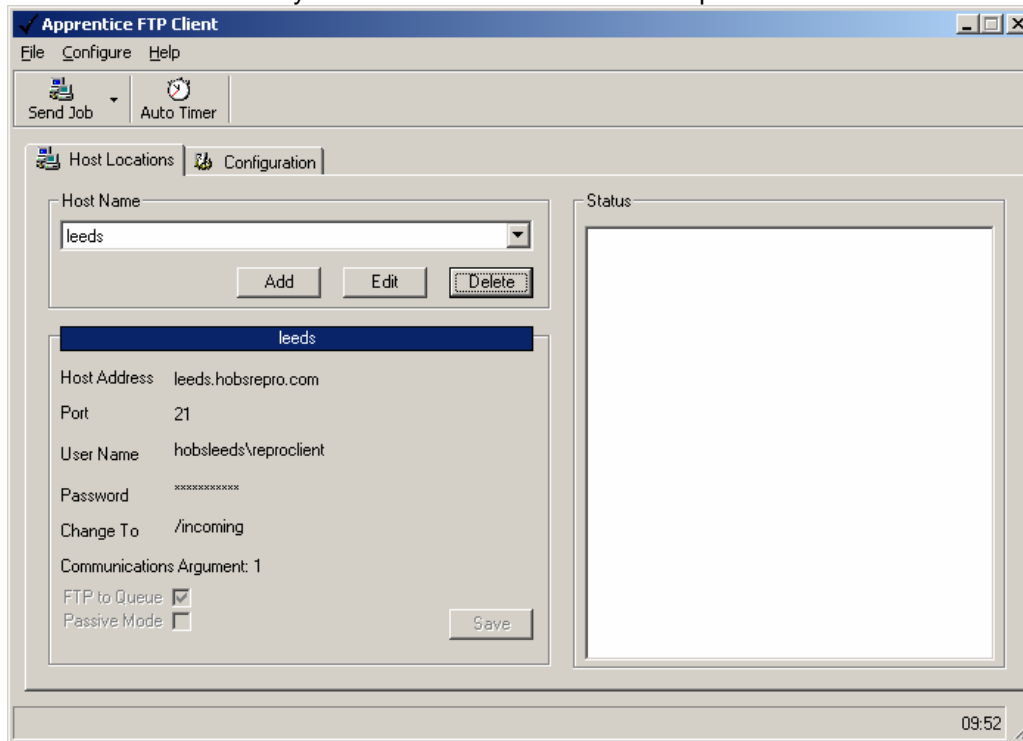
user login – hobsleeds\reproclient

password – hosemachine

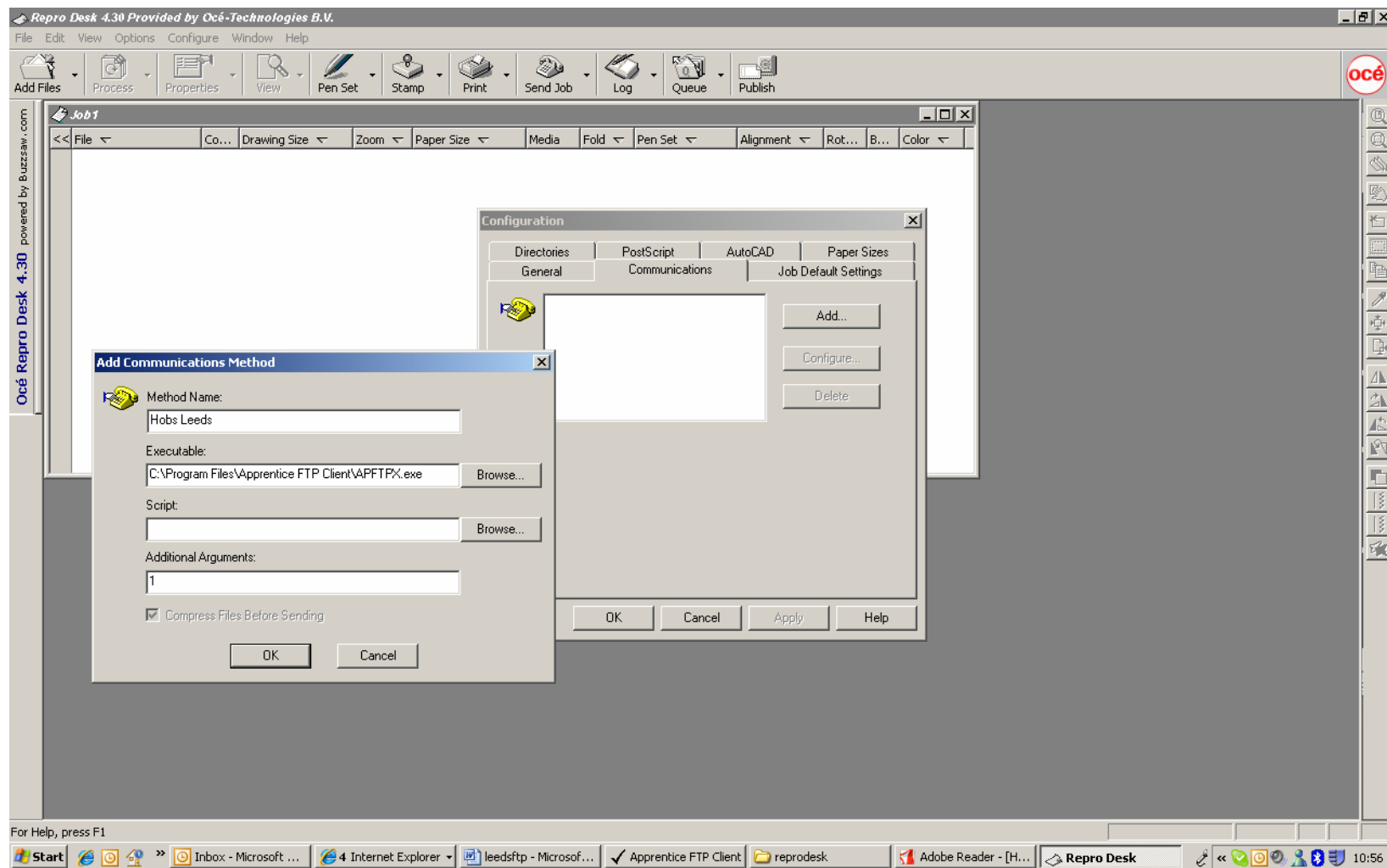
change to folder - /incoming

tick ftp to q

To be able to click save you must first click edit. This is a quirk of the software!



Configuring the communication settings for Reprodesk



Goto Configure, Defaults, Communications and add the setting as above. Click apply and OK.

Installation Complete

- Reprodesk is now installed and ready for use.
- There are a set of instructions on the CD in PDF format on how to use Reprodesk.